

Rebuild Paradise
Foundation

2022



ANNUAL REPORT

Reducing Barriers, Increasing
Recovery



a 501(C)(3) Nonprofit Organization, EIN
83400562



A MESSAGE FROM OUR FOUNDER & BOARD CHAIR

2022 was another significant year of growth and recovery for our community. The Rebuild Paradise Foundation has continued to deliver an impressive group of resources to the rebuild of our Camp Fire affected communities. This annual report serves as a glimpse into the service provided by our dedicated and talented team. I would like to personally thank Nicole Garrouette-Welcel for her years of service as our board chair since our inception. She has been instrumental in the creation, organization and support needed to establish, grow and maintain the Rebuild Paradise Foundation.



A MESSAGE FROM OUR EXECUTIVE DIRECTOR

What a fulfilling year 2022 was for the Rebuild Paradise Foundation! We were honored to be able to distribute over 1 million dollars for our Missing Middle Grant this year and we also added a new and exciting layer - the Septic Layer to our mapping resource! We love being a part of rebuilding our community and are always looking for way to step in and help. We are looking forward to continuing our commitment to the Camp Fire Recovery.



This year we were awarded an additional \$500,000 from North Valley Community Foundation for our Missing Middle Grant Program. At the end of 2022 we had distributed \$1,156,739 to 326 households! This continues to be a needed and popular program as it helps to cover up to \$5,000 of pre-construction costs, which are a giant financial burden for many. Thank you to all of our donors; American Red Cross, North Valley Community Foundation, Butte Strong, Paradise Rotary Foundation and many of you!

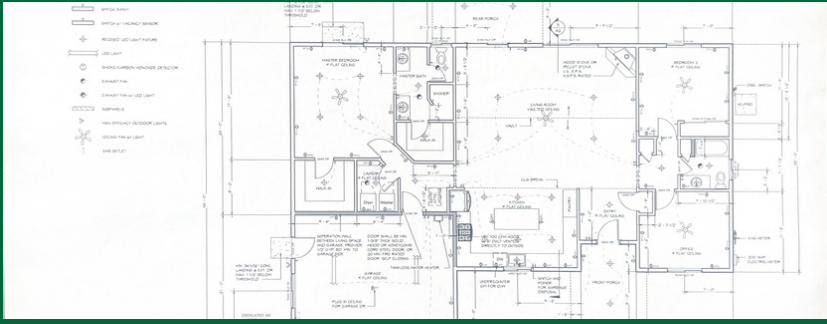
GRANT PROGRAMS

Bridging the financial
gap for those
trying to rebuild

SEPTIC GRANT

As of the end of 2022 we awarded over \$705,000 to 192 households! Septic systems are vital to our community and it's rebuild process, but they are also very expensive and a cost burden for many. Rebuild Paradise awards between \$3500 and \$7500 in reimbursement for septic related expenses that rebuilders encounter.





RESIDENTIAL FLOOR PLAN LIBRARY

This program provides access to low-cost mastered plans, pre-approved by the Town of Paradise and Butte County, for use within our community.

In 2022, Rebuild Paradise offered 12 residential master floor plans for people to choose from. Plans range anywhere from 750 sq. ft. to 1816 sq. ft.

Variations within each plan allow for flexibility to best fit the residents' needs and lot requirements.

We are so grateful to our funders which include; Fannie Mae, Paradise Rotary Foundation, American Red Cross, Obata Noblin Architects, Rancho Engineering, Design SI, JADA studio, Streamline Engineering, Jackson & Sands Engineering, the Town of Paradise, and Butte County for their commitment to this incredible and valuable resource.



So far, over 141 homes have been permitted using these plans, and of those, at least 50 have been built to completion!

DRONE SERVICES

The Rebuild Paradise Foundation has developed a Drone Services Program to support lowering pre-construction costs, provide partner organizations with valuable mapping resources, and capture imagery used in the storytelling of our community. Some of our drone projects in 2022 include assisting the following community partners:

1 / Local engineers

So far over 180 flights have been flown to help engineers with site plans - saving homeowners \$1,400 per half acre

2 / Butte Fire Safe Council

Documenting tree removal & forest thinning projects from above

3 / Paradise Rec. & Park District

Helping to map & plan future parks by providing aerial imagery

4 / Paradise Irrigation District

Drone flights assist with the construction of a new reservoir

5 / Local schools

Assisting with the planning of new school sites

6 / Town of Paradise

Aerial imagery documents the progress of new roads and sidewalks, as well as work being done on Hope Plaza

For more information on drone services visit our [website](#)

Homeowners Insurance Availability

Since our community is located in the Wildland Urban Interface, insurance coverage is vital. Availability to accurate information helps equip residents both in and out of the burn scar with insurance education and options. The Rebuild Paradise Foundation developed web-based presentations to help people navigate the ever-changing insurance marketplace in the fire-affected and fire prone areas of our region. We joined with United Policyholders, and others from around the state, in a collaborative effort to influence the insurance industry in recognizing individual and community efforts towards home hardening and mitigation for lowering insurance rates and improving homeowner insurance availability. Our matrix on insurance for site built and manufactured homes can be found on our [website](#)

"There truly aren't words that properly articulate how grateful we are for this! Amazing work, exactly what we needed. We will be so excited to share as we go the great work you have done for us- Thank you Stephen!"

Marc Maddox-Town Engineer for the Town of Paradise

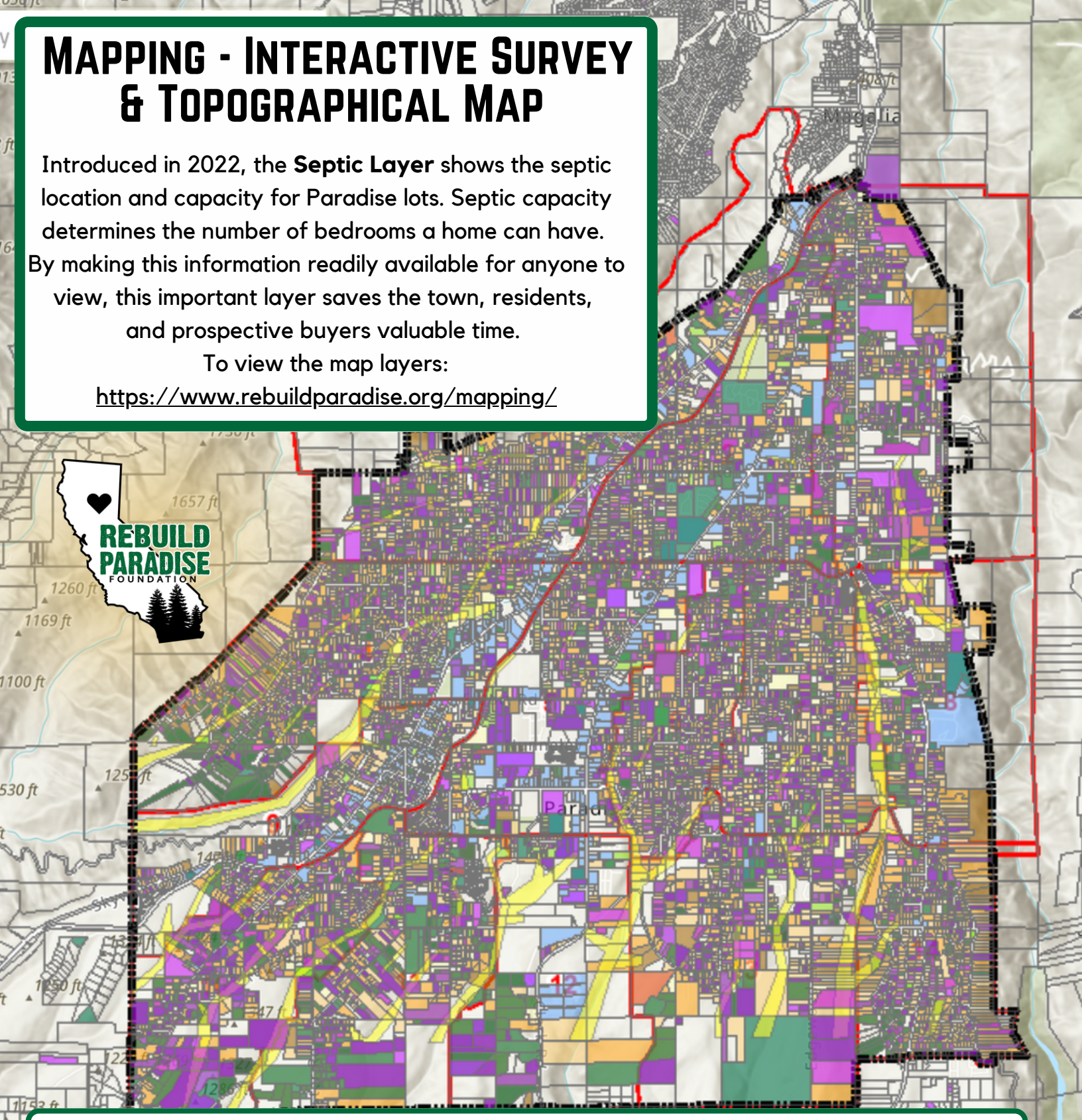


MAPPING - INTERACTIVE SURVEY & TOPOGRAPHICAL MAP

Introduced in 2022, the **Septic Layer** shows the septic location and capacity for Paradise lots. Septic capacity determines the number of bedrooms a home can have. By making this information readily available for anyone to view, this important layer saves the town, residents, and prospective buyers valuable time.

To view the map layers:

<https://www.rebuildparadise.org/mapping/>



Rebuild Paradise Foundation's Mapping Tool also includes:

- An Evacuation Zone Overlay layer so town residents know which zone they reside
- A locked layer accessible to people meeting with town staff or a Rebuild Advocate that shows where building permits have been issued and standing structures remain.
- 2-foot contour intervals that design professionals can use to help determine slope for a rebuild, potentially without going to a property.
- A parcel survey layer, driven by public data, that shows properties that have provided the Town of Paradise with Certificates of Survey. This survey data allows individuals to save money by accessing survey companies who have surveyed adjacent properties.
- High Resolution Aerial Imagery that was captured mid-debris removal and offers clarity improvement over Google Earth and other publicly available data.



HIGHLIGHTS

Daffodil Bulb Giveaway

- We were able to purchase 1000 daffodil bulbs from our local garden club to put back into the hands of our community. This flower was the first sign of life after the Camp Fire and is the official town flower. Over 186,000 have been planted around the town. This program was so successful we had people asking for months for more bulbs.

Events

- **Speed Dating for Contractors** - an event to help build our workforce connecting contractors to subcontractors
- **Career Expo** - partnering with our local rotary club we were able to introduce our up-and-coming work force, students from our own community, to all of the job opportunities on the Ridge - especially the trades
- **Love Paradise** - working along with our community 2 days a year to help beautify, reduce fuels, and help cleanup

Media & Stories

- We utilize media inquiries and stories to help champion the victories and hurdles in our community



FUTURE

- Conducting a study with Chico State about who is moving to the Ridge
- New & improved master floor plans
- Continuing grants programs
- Insurance Support & Wildfire prepared home education
- Special 5 year recap & commemorative story



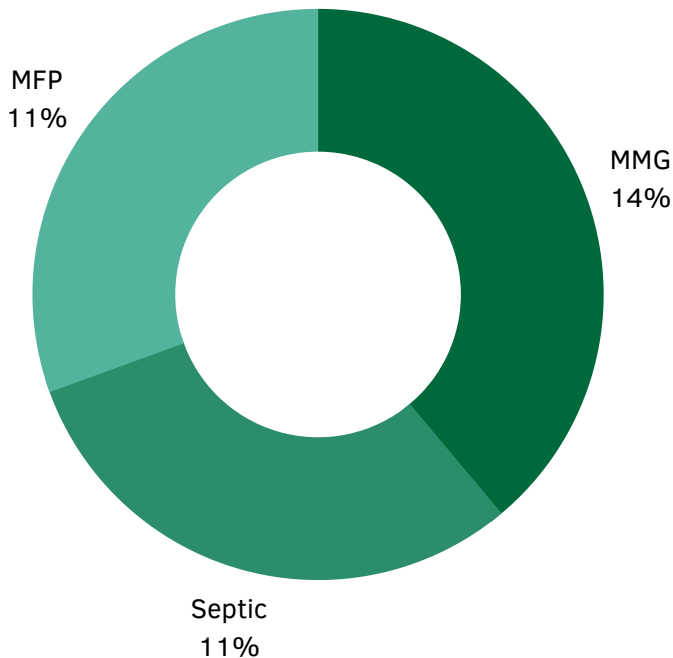
2022 COMMUNITY IMPACT

By the end 2022 1,741 homes have been built to completion in Paradise. Here is how our programs have impacted those rebuilds.

- Master Floor Plan Library (MFP) has impacted 11% of rebuilds
- Missing Middle Grant (MMG) has impacted 14% of rebuilds
- Septic Grant has impacted 11% of rebuilds

- Master Floor Plan Library 141 permits issued
- Missing Middle Grant over \$1.1 million awarded
- Septic Grant over \$687,000 awarded

We've come so far





**THANK YOU,
PARTNERS
AND DONORS!**

Rebuild Paradise Foundation could not accomplish our mission without the generous support of our donors, partners, and sponsors.

Butte Strong Fund | Paradise Rotary Foundation | Roplast Industries, Inc. | Thrive Market | Positive | Dance Studio | American Red Cross | Stonefield Development | Numi Tea | Arbonne Region of Jordan Cox Design Si | CBPA | Arbonne Region of Kristi Hilmer | Fannie Mae | Michael Jobes | Chico Executives Group | Arbonne Nation of Mo Boeger | DK WebDesign | Rising Springs/Hect Family | Curtis Deberg | Sacramento Region Community Foundation | North Valley Community Foundation | Paradise Design Group | Naked Tomato | Allevity HR & Payroll | NorthStar Engineering | Rebuild Northbay Foundation | JADAstudio | Guild Mortgage | Rancho Engineering | Sambazon International | Heritage Insurance Agency | Obata Noblin Architects California Community Foundation | Clarity on the Page | Woods Group Solutions | Figure Architects | Farmers Office of Brad Jacobson | Nevin & Witt Insurance and Financial Services | Vicki Brown Taylor | Fannie Mae | Tri-Counties Bank | Lynn Bomberger | Barry & Wynn Architects | DroneDeploy | Morgan Stanley Wealth Mgmt General Pacific Corporation | DJI Drones | SmartNet USA | Esplanade Office Furniture | Streamline Engineering Luara & Larry Knifong | FastCabinet Doors, INC | Scott and Carolyn Steele | Digital Path | Water Works Engineering



a 501(C)(3) Nonprofit Organization, EIN 83400562

MEET THE TEAM



STAFF



Jen Goodlin

Executive Director



Lindsey Churchill

Project Coordinator



Staci Galla

Administrative assistant



Stephen Klessel

Drone Pilot

BOARD OF DIRECTORS 2022



Charles Brooks

Board Chair



Nicole Gauroutte

Graphic Designer



Holly Fisher

Treasurer



Casey Taylor

Vice Chair



Chuck Rough-

Board Member Emeritus &
Advisor



Loretta Weber

Board Member Emeritus